

north shore outdoor circle

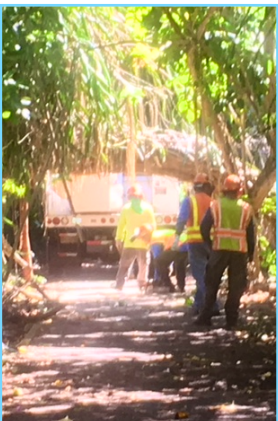
keeping the north shore clean, green, and beautiful



Thespesia populnea
or Milo Tree flower



Night Blooming
Cereus Vine



You may have wondered what was happening on the Bike Path in August when you saw crews cutting down the iconic and beloved Milo Arch.

Well, the truth is that the poor tree had been overgrown with Night Blooming Cereus and was not salvageable. It was a hazard for bicyclists, and pedestrians alike, and had to be removed by the City and County of Honolulu. Be assured that this was only after an arborist assessed the situation and determined that the arch was sinking and dangerous .

Part of the remaining Milo tree is being strangled by Cereus along with the trees on each side of it.

North Shore Outdoor Circle is in the process of applying for grants in order to secure a thorough pruning of the Ke Ala Pupukeya Bike Path. Then the city can maintain it going forward. Regular maintenance would probably have prevented this tragedy.



Jennifer Ueno, Pitter Scanlon, Lea Albert

Adopt a Garden

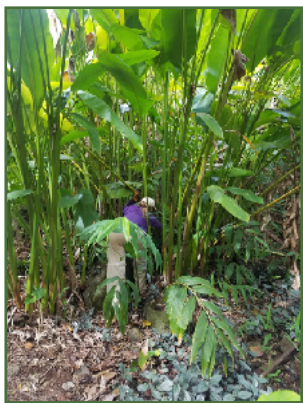
NSOC loves Waimea Valley

Last March we had our biannual General Membership Meeting and one of our guest speakers was the charming Melani Spielman. She is the Volunteer Coordinator at Waimea Valley.

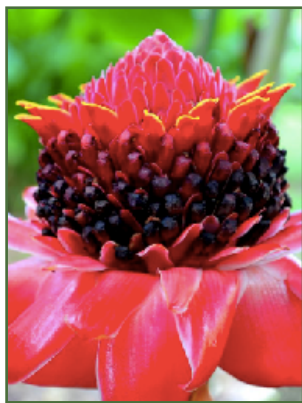
She told us about a program that encourages community groups to give back by adopting a garden within the vast area which comprises Waimea Valley. NSOC Board members thought this was a wonderful opportunity, and began work on June 25th in the Torch Ginger Alley.

We met Melani at 8 am, armed with gloves and a willing spirit. We worked for 2 hours, digging, cutting, pulling, raking, smoothing, and giving the area some love. Our area looked so much better when we were done, but then we realized just how daunting this responsibility must be for those who care for the Valley. There are many gardens in the park which need care, but when our two hours were up, we felt tired and a little sore, but glad we could do our small part to help this magical part of the North Shore remain clean, green, and beautiful.

You are invited to join us. We are continuing this activity every third Monday of the month. Look for the flyers. The next one will be on October 22nd.



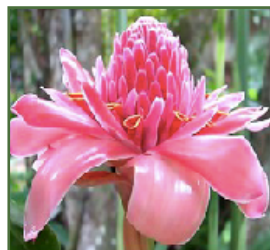
Dawn Peerson, deep in the jungle.



Julia Fetzer, Vera Stone, Kerry Germain



Julia Fetzer



Ruth Holmberg, Yvonne Alexander, Peggy Cutting, Jennifer Ueno, Lea Albert, Pitter Scanlon, Kerry Germain

Politics!

Bill 45 YES Bills 46, 47 NO

We are so fortunate to have Kathy Whitmire on our NSOC Board. She is able to untangle the Gordian Knot of the meaning of legislative proposals. Coming to the City Council in November is a confusing array of choices affecting the beauty of the North Shore.

Bills 45, 46, and 47 are now before the Zoning Committee.

Bill 45 and 46: Haleiwa Special District Amendments

Bill 47: island-wide regulation of food trucks and other "mobile" commercial establishments.

Bill 45 was proposed in Resolution 17-79 approved by City Council in June 2017 and endorsed by NSOC as well as the North Shore Chamber of Commerce. It amends the Haleiwa Special District Ordinance as follows:

- *adds views of the ocean from Kamehameha Highway as important view planes for protection
- *protects the public view of historic structures
- *requires plantation color schemes to be used in new development
- *extends the district boundaries to Pua'ena Point
- *limits the location of food trucks, restricts signage, requires landscaping, off-street parking and proper waste disposal where food trucks operate.

NSOC supports final passage of Bill 45 but not the other two.

Bill 46 is a substitute bill proposed by the Department of Planning and Permitting. It allows for an increase in the location of food trucks and eliminates most other proposed restrictions. It also authorizes portable signs for food trucks.

Summary:

Bill 46 along with Bill 47 (Mobile Commercial Establishments) seem to indicate a complete endorsement of non-mobile food trucks and all the sign clutter and visual blight that go with them.

To get involved in our work to reduce sign clutter and preserve the visual beauty of the North Shore, contact Sign Committee Chair

Kathy Whitmire at kathyjwhit@aol.com

and attend the next meeting of the sign committee



Sunset Beach - clean, green, and beautiful.



before

Bike Path, and creating two beautiful paths in between dunes that have been restored with native flora.

In the morning on Saturday September 8th, a large group of volunteers came out and planted native plants and built fencing. The hope is, if visitors to the beach use designated paths, the erosion will abate, the plants will grow, and the Bike Path will be usable for decades to come.

Over the previous winters, there has been quite a bit of erosion on our north shore, especially in the Sunset Beach area. This has caused significant damage to our beloved Bike Path, Ke Ala Pupukea. Parts of it have fallen into the sand and are in the process of being rebuilt. In September a public/private partnership of organizations took on the job of restoring the



Some of our NSOC volunteers enjoying the beautiful day and helping their community. In back; Tinker Blomfield, Ruth Holmberg. In front; Yvonne Alexander and Lea Albert.



after



Ono Eats by Ke Nui Kitchen

General Membership Meeting - Waimea Valley

Monday, September 24, 2018



Co-President Ruth Holmberg

A lively group gathered in the beautiful Proud Peacock. We started with a slide show of highlights from our year while enjoying delicious pupus and conversation.

When the meeting was called to order, our co-president Ruth Holmberg gave a brief overview of some of our projects; some that are in process and some that we have completed. Next we installed our slate of officers. Then our Beautification Committee members presented the prestigious Beautification Awards to those members of the community who have gone above and beyond to create landscapes for all to enjoy.



Dawn Peerson with recipient



Ed Shanahan, Kerry (Gidget) Germain, Yvonne Alexander, Kathy Whitmire, Pitter Scanlon, Rex Shanahan, Peggy Cutting, Dawn Peerson, Vera Stone

After a short break it was time for our speakers representing The Trust for Public Land Hawai'i. Lea Hong is the Hawaiian Islands State Director and Stephen Rafferty is the Project Director. They shared many island projects that aim to establish and protect open lands - forever.



Past President Diane Anderson

They truly embody the NSOC's mission statement to keep the north shore clean, green, and beautiful. For more information contact <https://www.hilt.org> to find out more about them.



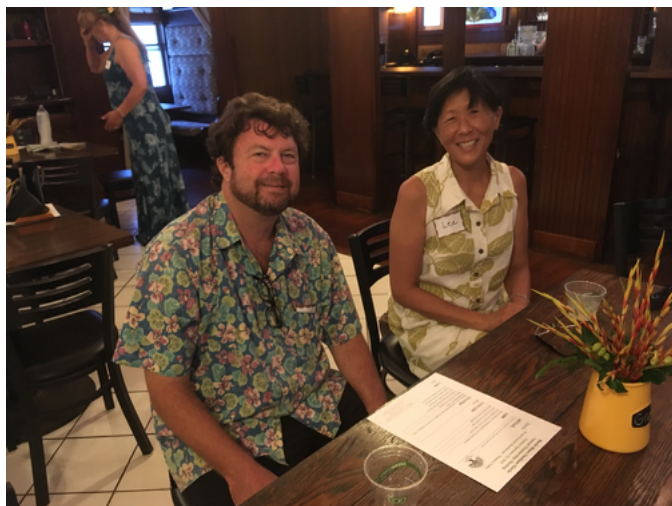
Marina, Yvonne, Vera



Lea Hong



Bob Leinau adding to the discussion regarding the area of Waimea Valley which The Land Trust is going to purchase and preserve.



Stephen Rafferty and Lea Hong

Presidents' Message

Aloha!

**We are 70 members
strong now,
small but mighty.
We hope you'll join us for an
event or activity.**

Aloha,

The NSOC is committed to doing good works which fulfill our mission and benefit our community now and for future generations. We have had a busy spring and summer supporting this mission.

Partnerships have been paramount in the good works we have enjoyed lately.

A hot but productive day working with the North Shore Community Land Trust on the Sunset Beach dune restoration was very rewarding. It was great to see so many community members out to support the effort.

Working with Waimea Valley in the ginger garden we have adopted has been restorative for the area and for those of us who have enjoyed the camaraderie and pleasure of being in the valley in the early morning, weeding and clearing.

We continue to partner with City and County and to keep the Waimea Bay view plane open. We are looking for other partnerships and grants for the future that can help us make this area into a hillside that will be more easily maintained through design and plantings.

The same wish is true for Ke Ala Pupukea. The trees and some of the larger shrubbery need care that the City and County appears to be unable to maintain at this point. We hope to work together with the City to get some of this work done before the trees are further damaged through neglect.

The sign committee, led by Kathy Whitmire, has persistently pursued City Council bills concerned with the revision of the land use ordinances in the Haleiwa Special District as they pertain to signage and visual impacts. A successful agreement appears to be in sight that will ensure protections and improvements that will provide benefits far into the future.

All of our board members and committee chairs generously offer their time and expertise. We are grateful for their dedication and that of all members who volunteer their time to further these good works.

We hope to see all of our members at the upcoming holiday celebration.

Lea Albert and Ruth Holmberg Co-Presidents



Ruth

Lea

**We sincerely thank all
members for their good
works and support of the
mission of the
North Shore Outdoor Circle.**